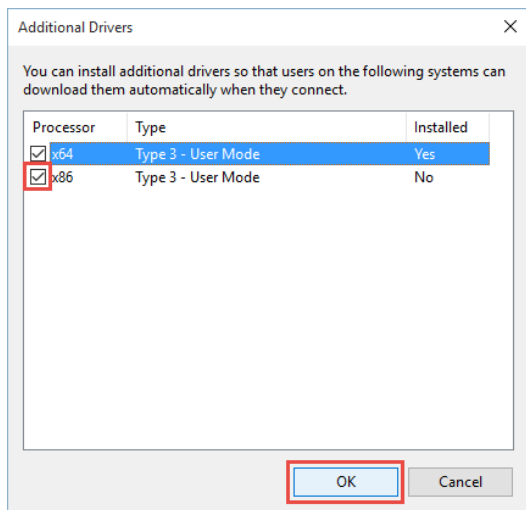


Enabling driver to use 32 and 64 bit

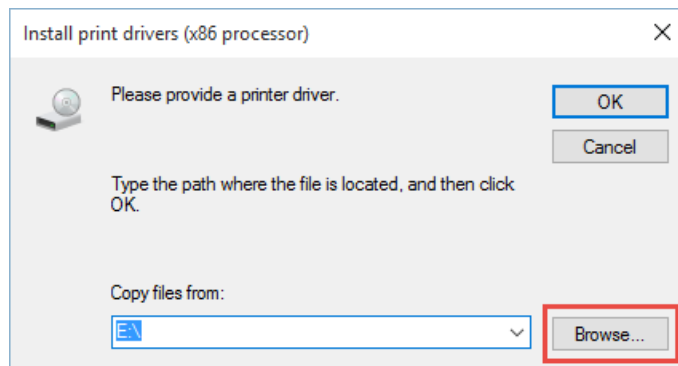


Lexmark™

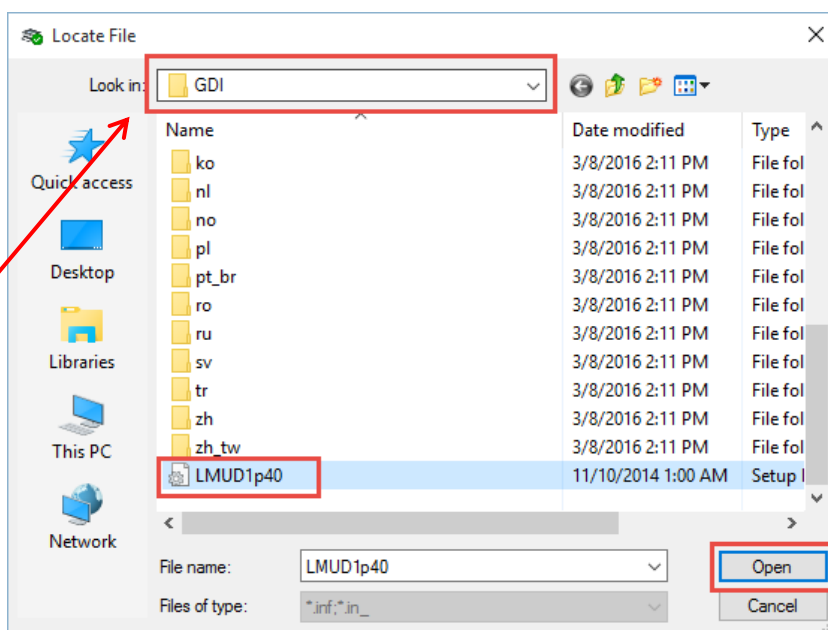
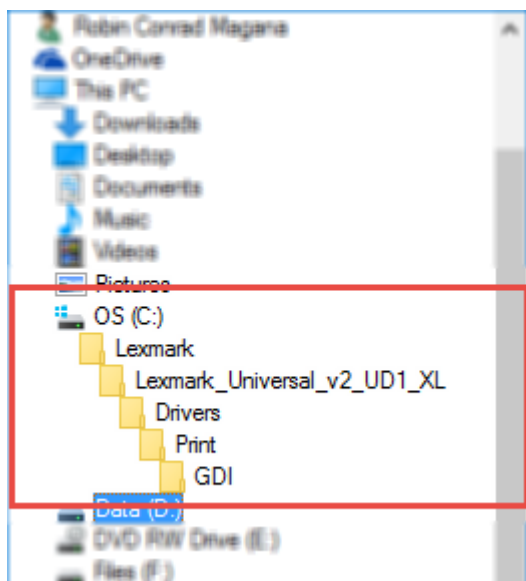
1. Check box “x86” and click “OK”



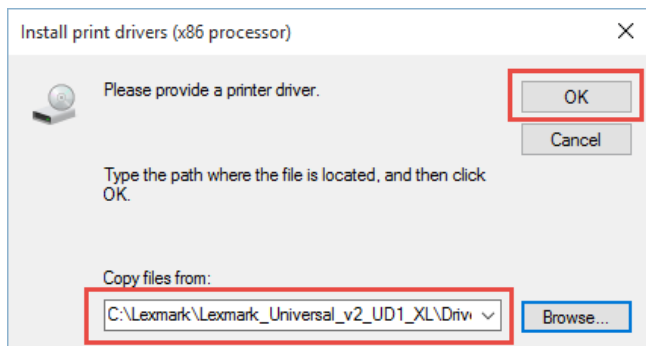
2. Click “browse” to locate the file



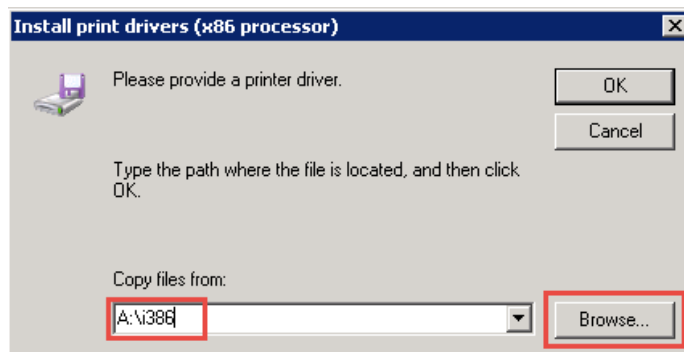
3. Look for the GDI folder located in the **extracted printer driver file**.
- in the GDI folder, look for “LMUD...” setup information file and click open.



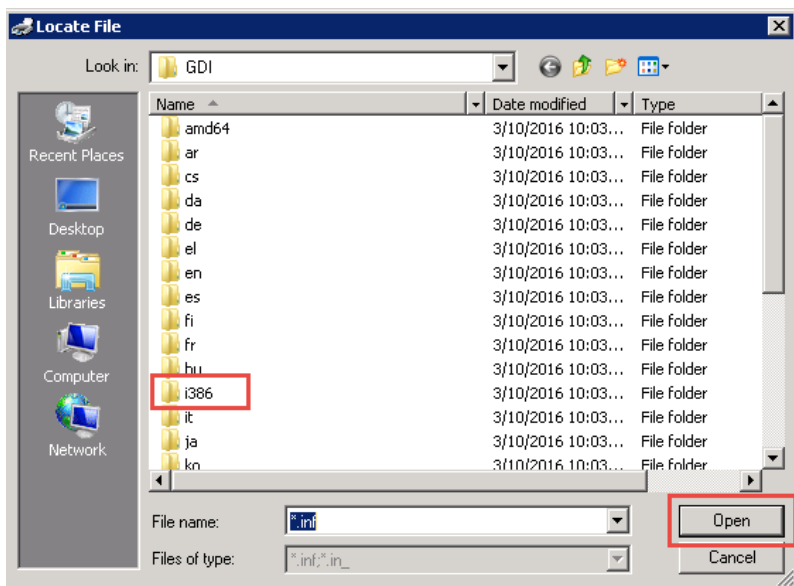
4. Click “OK”



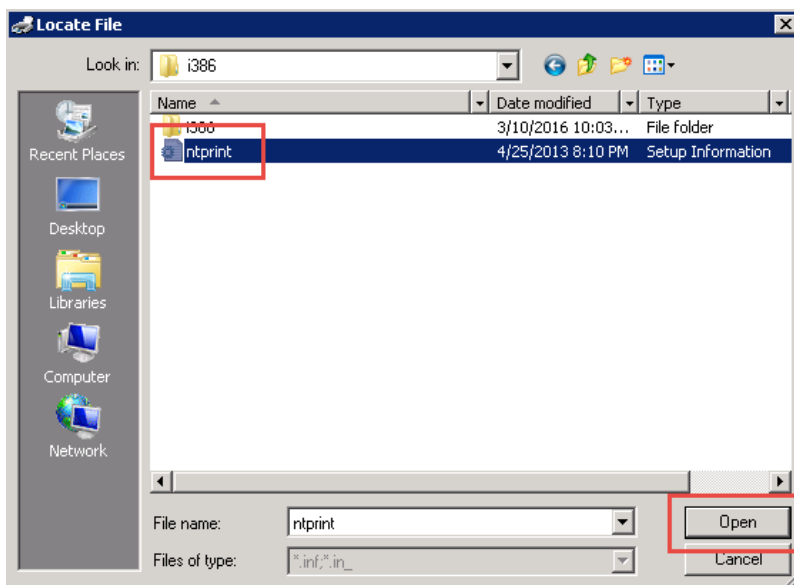
5. Next, locate the “i386” file.
- Click “Browse”



6. In the GDI folder, open the “i386” folder.



7. In the i386 folder, select “ntprint” and click open.



8. Click “OK”

